



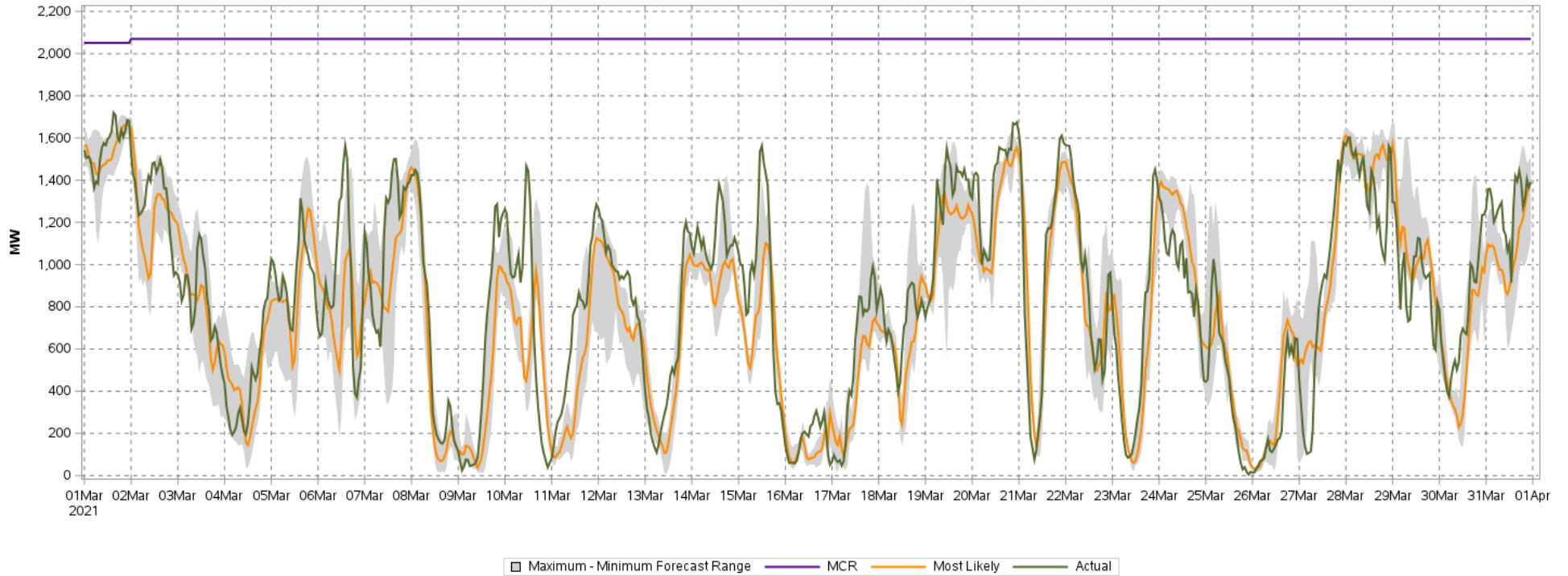
### Day Ahead Wind & Solar Power Forecast vs. Actual Wind & Solar Production for the Month of Mar 2021

This figure is intended to illustrate the correlation between the wind & solar power forecast received from Energy & Meteo Systems GmbH and actual wind production.

**Accuracy Statistics:**

Mean absolute percent error (MAPE) = 8.1%

Average range between the maximum and minimum forecast = 344 MW



Prepared on on April 30, 2021