



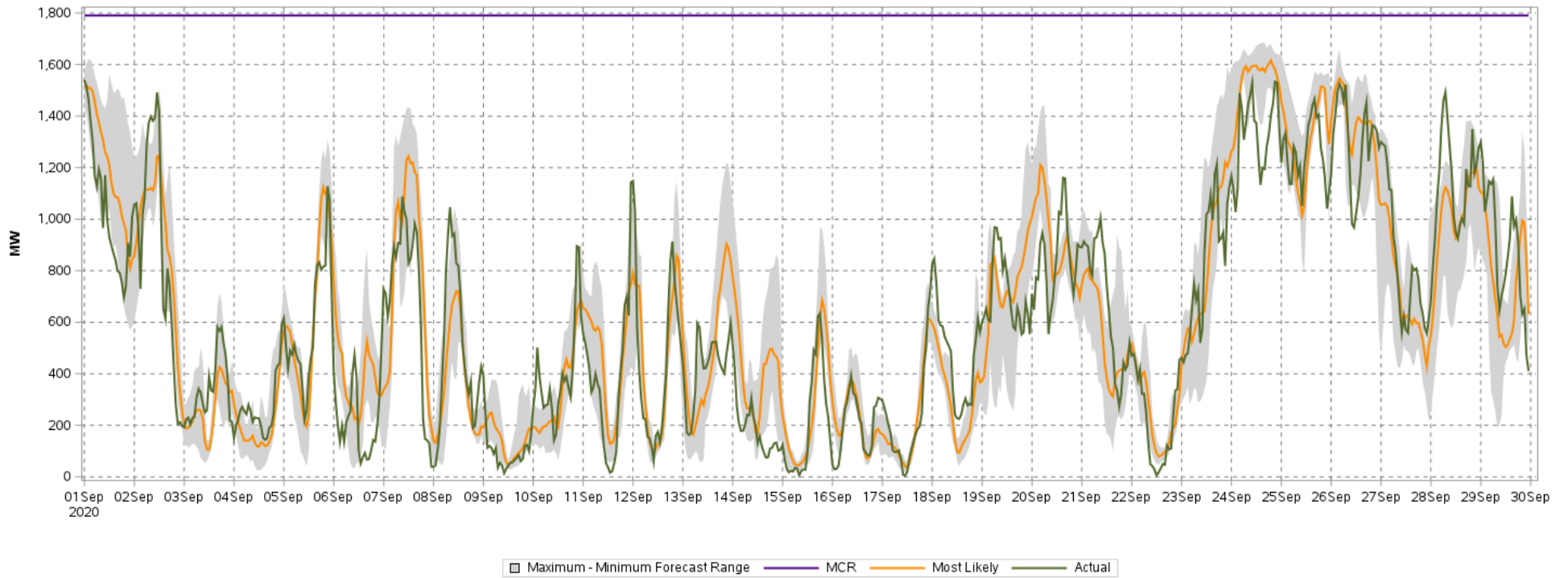
### Day Ahead Wind Power Forecast vs. Actual Wind Production for the Month of Sep 2020

This figure is intended to illustrate the correlation between the wind power forecast received from Energy & Meteo Systems GmbH and actual wind production.

**Accuracy Statistics:**

Mean absolute percent error (MAPE) = 7.9%

Average range between the maximum and minimum forecast = 341 MW



Prepared on on October 08, 2020